

REC TWINPEAK 2 MONO SERIES

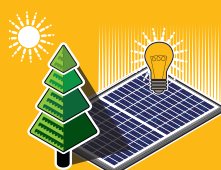
PREMIUM SOLAR PANELS WITH SUPERIOR PERFORMANCE

REC TwinPeak 2 Mono Series solar panels feature an innovative design with high panel efficiency and power output, enabling customers to get the most out of the space used for the installation.

Combined with industry-leading product quality and the reliability of a strong and established European brand, REC TwinPeak 2 Mono panels are ideal for residential and commercial rooftops worldwide.



**MORE POWER
OUTPUT PER M²**



**IMPROVED PERFORMANCE
IN SHADED CONDITIONS**



**100%
PID FREE**

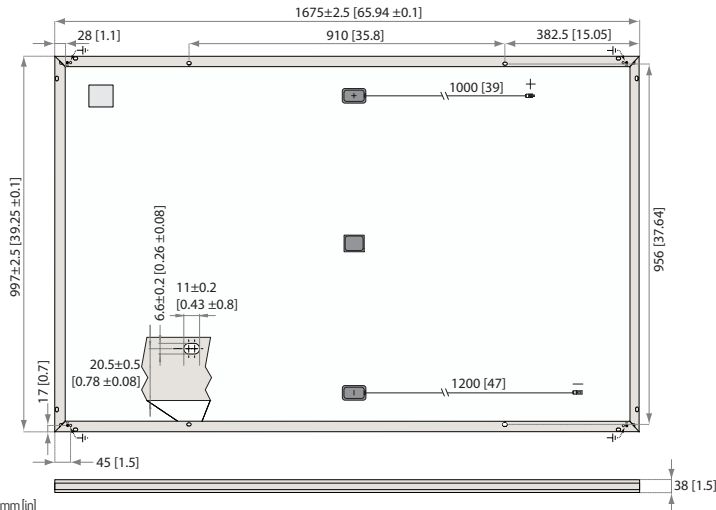


**REDUCES BALANCE OF
SYSTEM COSTS**



ELIGIBLE FOR

REC TWINPEAK 2 MONO SERIES



Measurements in mm [in]

ELECTRICAL DATA @ STC

Product code*: RECxxxTP2M

	300	305	310	315	320	325	330
Nominal Power - P_{MAX} (Wp)	300	305	310	315	320	325	330
Watt Class Sorting - (W)	-0/+5	-0/+5	-0/+5	-0/+5	-0/+5	-0/+5	-0/+5
Nominal Power Voltage - V_{MPP} (V)	33.0	33.3	33.5	33.7	33.9	34.0	34.3
Nominal Power Current - I_{MPP} (A)	9.11	9.17	9.26	9.36	9.45	9.56	9.62
Open Circuit Voltage - V_{OC} (V)	38.3	38.8	39.1	39.6	40.0	40.3	40.8
Short Circuit Current - I_{SC} (A)	10.01	10.04	10.07	10.10	10.13	10.15	10.19
Panel Efficiency (%)	18.0	18.3	18.6	18.9	19.2	19.5	19.8

Values at standard test conditions (STC: air mass AM1.5, irradiance 1000 W/m², temperature 25°C), based on a production spread with a tolerance of P_{MAX} , V_{OC} & I_{SC} ±3% within one watt class. At a low irradiance of 200 W/m² at least 95% of the STC module efficiency will be achieved.

*Where xxx indicates the nominal power class (P_{MAX}) at STC indicated above.

ELECTRICAL DATA @ NMOT

Product code*: RECxxxTP2M

	224	227	231	235	239	242	246
Nominal Power - P_{MAX} (Wp)	224	227	231	235	239	242	246
Nominal Power Voltage - V_{MPP} (V)	30.7	31.0	31.2	31.4	31.6	31.7	31.9
Nominal Power Current - I_{MPP} (A)	7.29	7.34	7.41	7.49	7.56	7.65	7.70
Open Circuit Voltage - V_{OC} (V)	35.6	36.1	36.4	36.8	37.2	37.5	38.0
Short Circuit Current - I_{SC} (A)	8.01	8.03	8.06	8.08	8.10	8.12	8.15

Nominal module operating temperature (NMOT: air mass AM1.5, irradiance 800 W/m², temperature 20°C, windspeed 1 m/s).

*Where xxx indicates the nominal power class (P_{MAX}) at STC indicated above.

CERTIFICATIONS



UL 1703, Fire classification: Type 2; IEC 61215, IEC 61730; IEC 62804 (PID), IEC 62716 (Ammonia Resistance), IEC 61701 (Salt Mist Level 6), ISO 9001: 2015, ISO 14001: 2004, OHSAS 18001: 2007

WARRANTY

	Standard		REC ProTrust	
	No	Yes	Yes	Yes
Installed by an REC Certified Solar Professional	No	Yes	Yes	Yes
System Size	Any	≤25 kW		25-500 kW
Product Warranty (yrs)	20	25	25	25
Power Warranty (yrs)	25	25	25	25
Labor Warranty (yrs)	0	25	10	10
Power in Year 1	97.5%	97.5%	97.5%	97.5%
Annual Degradation	0.7%	0.7%	0.7%	0.7%
Power in Year 25	80.7%	80.7%	80.7%	80.7%

See warranty documents for details. Some conditions apply.

19.8% EFFICIENCY

20 YEAR PRODUCT WARRANTY

25 YEAR LINEAR POWER OUTPUT WARRANTY

TEMPERATURE RATINGS

Nominal Module Operating Temperature:	44.6°C (±2°C)
Temperature coefficient of P_{MAX} :	-0.37 %/°C
Temperature coefficient of V_{OC} :	-0.28 %/°C
Temperature coefficient of I_{SC} :	0.04 %/°C

GENERAL DATA

Cells:	120 half-cut mono-Si p-type PERC cells 6 strings of 20 cells in series
Glass:	0.13" (3.2 mm) solar glass with anti-reflective surface treatment
Back sheet:	Highly resistant polyester polyolefin construction
Frame:	Anodized aluminum
Junction box:	3-part with 3 bypass diodes, IP67 rated 12 AWG (4 mm ²) PV wire, 39" + 47" (1.0 m + 1.2 m)
Connectors:	Stäubli MC4 PV-KBT4/PV-KST4, 12 AWG (4 mm ²)

MAXIMUM RATINGS

Operational temperature:	-40 ... +185°F (-40 ... +85°C)
Maximum system voltage:	1000 V
Design load (+): snow	3600 Pa (75.2 lbs/ft ²)*
Maximum test load (+):	5400 Pa (112.8 lbs/ft ²)*
Design load (-): wind	1600 Pa (33.4 lbs/ft ²)*
Maximum test load (-):	2400 Pa (50 lbs/ft ²)*
Max series fuse rating:	20 A
Max reverse current:	20 A

* Calculated using a safety factor of 1.5
* See installation manual for mounting instructions

MECHANICAL DATA

Dimensions:	65.9 x 39.25 x 1.5 (1675 x 997 x 38 mm)
Area:	17.98 ft ² (1.67 m ²)
Weight:	40.8 lbs (18.5 kg)

Note! Specifications subject to change without notice.



Founded in Norway in 1996, REC is a leading vertically integrated solar energy company. Through integrated manufacturing from silicon to wafers, cells, high-quality panels and extending to solar solutions, REC provides the world with a reliable source of clean energy. REC's renowned product quality is supported by the lowest warranty claims rate in the industry. REC is a Bluestar Elkem company with headquarters in Norway and operational headquarters in Singapore. REC employs around 2,000 people worldwide, producing 1.5 GW of solar panels annually.



www.recgroup.com