



# SIL-390 NT



## HIGH EFFICIENCY PREMIUM MONO-PERC PV MODULE



CHUBB\*

\* Chubb provides error and omission insurance to Silfab Solar Inc.

### INDUSTRY LEADING WARRANTY

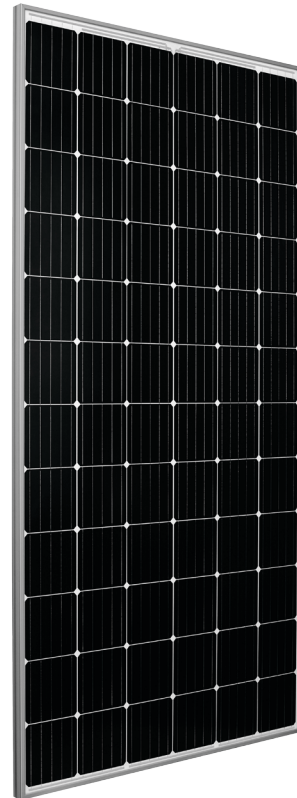
All our products include an industry leading 25-year product workmanship and 30-year performance warranty.

### 40+ YEARS OF SOLAR INNOVATION

Leveraging over 40 years of worldwide experience in the solar industry, Silfab is dedicated to superior manufacturing processes and innovations such as Bifacial and Back Contact technologies, to ensure our partners have the latest in solar innovation.

### QUALITY MATTERS

Utilizing premium quality materials and strict quality control management, Silfab is the industry leader in delivering the highest efficiency, premium quality PV modules.



### ■ MAXIMUM POWER

Silfab's high-efficiency modules are optimized for commercial projects where maximum power density is preferred.

### ■ LIGHT AND DURABLE

Engineered to accommodate high front-side load conditions for test loads validated up to 5400Pa. The light-weight frame is exclusively designed for wide-ranging racking compatibility and durability.

### ■ DOMESTIC SUPPORT/SERVICES

Our 500+ North American team is ready to help our partners and customers with customer service and product information that is direct, efficient and local.

### ■ SLEEK DESIGN

Sleek design in silver frame with white backsheet.

### ■ PID RESISTANT

PID Resistant due to advanced cell technology and material selection. In accordance to IEC 62804-1.

Electrical Specifications		SIL-390 NT mono PERC	
Test Conditions		STC	NOCT
Module Power (Pmax)	Wp	390	284.3
Maximum power voltage (Vpmax)	V	39.24	36.1
Maximum power current (Ipmax)	A	9.95	7.9
Open circuit voltage (Voc)	V	48.3	44.4
Short circuit current (Isc)	A	10.27	8.1
Module efficiency	%	19.7	17.9
Maximum system voltage (VDC)	V	1000	
Series fuse rating	A	20	
Power Tolerance	Wp	0 to +10	
Measurement conditions: STC 1000 W/m² • AM 1.5 • Temperature 25 °C • NOCT 800 W/m² • AM 1.5 • Measurement uncertainty ≤ 3% • Sun simulator calibration reference modules from Fraunhofer Institute. Electrical characteristics may vary by ±5% and power by 0 to +10W.			
Temperature Ratings		SIL-390 NT mono PERC	
Temperature Coefficient Isc		0.03 %/°C	
Temperature Coefficient Voc		-0.3 %/°C	
Temperature Coefficient Pmax		-0.38 %/°C	
NOCT (± 2°C)		44 °C	
Operating temperature		-40/+85 °C	
Mechanical Properties and Components		SIL-390 NT mono PERC	
	Metric	Imperial	
Module weight	21.5 kg ±0.3 kg	47.4 ±0.6 lbs	
Dimensions (H x L x D)	1992 mm x 994 mm x 38 mm	78.4 in x 39.1 in x 1.5 in	
Maximum surface load (wind/snow)*	2400 Pa rear load / 5400 Pa front load N/m²	50.1/112.8 lb/ft^2	
Hail impact resistance	ø 25 mm at 83 km/h	ø 1 in at 51.6 mph	
Cells	72 - Si mono PERC - 5 busbar 158.75 x 158.75 mm	72 - Si mono PERC - 5 busbar 6.25 x 6.25 Inch	
Glass	3.2 mm high transmittance, tempered, DSM anti-reflective coating	0.126 in high transmittance, tempered, DSM anti-reflective coating	
Cables and connectors (refer to installation manual)	1200, ø 5.7, MC4 compatible	47.2 in, ø 0.22 in (12AWG), MC4 compatible	
Backsheet	Highly reflective white backsheet, high durability, superior hydrolysis and UV resistance, multi-layer dielectric film, fluorine-free PV backsheet		
Frame	Anodized Aluminum (Silver)		
Bypass diodes	3 diodes-30SQ045T (45V max DC blocking voltage, 30A max forward rectified current)		
Junction Box	UL 3730 Certified, IEC 62790 Certified, IP67 rated		
Warranties		SIL-390 NT mono PERC	
Module product workmanship warranty	25 years**		
Linear power performance guarantee	30 years		
	≥ 97.1% end 1 <sup>st</sup> year   ≥ 91.6% end 12 <sup>th</sup> year   ≥ 85.1% end 25 <sup>th</sup> year   ≥ 82.6% end 30 <sup>th</sup> year		
Certifications		SIL-390 NT mono PERC	
Product	ULC ORD C1703, UL1703, CEC listed***, UL 61215-1/-1-1/-2, UL 61730-1/-2, IEC 61215-1/-1-1/-2***. IEC 61730-1/-2***, CSA C22.2#61730-1/-2***, IEC 62716 Ammonia Corrosion; IEC61701:2011 Salt Mist Corrosion Certified, UL Fire Rating: Type 1 (1500V) or Type 2 (1000V)		
Factory	ISO9001:2015		

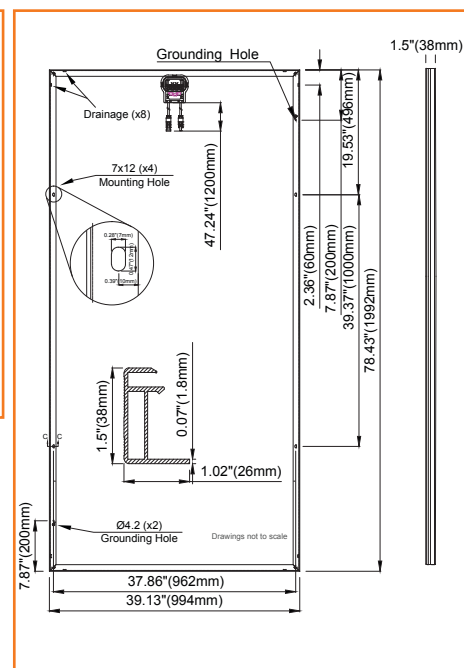
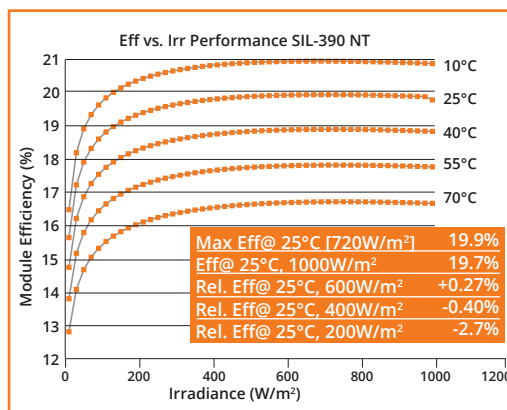
Option A Horizontal      Option B Vertical  
 ■ Modules Per Pallet: 25      ■ Modules Per Pallet: 27  
 ■ Pallets Per Truck: 30      ■ Pallets Per Truck: 28  
 ■ Modules Per Truck: 750      ■ Modules Per Truck: 756

\*⚠ Warning. Read the Safety and Installation Manual for mounting specifications and before handling, installing and operating modules.

\*\*12 year extendable to 25 years subject to registration and conditions outlined under "Warranty" at [www.silfab solar.com](http://www.silfab solar.com).

\*\*\*Certification in progress. August 2020 expected completion date for CEC listing, IEC 61730/61215 and CSA C22.2#61730-1/-2.

Third-party generated pan files from Fraunhofer-Institute for Solar Energy Systems ISE are available for download at: [www.silfab solar.com/downloads](http://www.silfab solar.com/downloads)



Silfab Solar Inc.  
 240 Courtneypark Drive East  
 Mississauga ON L5T 2Y3 Canada  
 Tel +1 905-255-2501 | Fax +1 905-696-0267  
 info@silfab solar.com | [www.silfab solar.com](http://www.silfab solar.com)

Silfab Solar Inc.  
 800 Cornwall Ave  
 Bellingham WA 98225 USA  
 Tel +1 360-569-4733

Silfab Solar Inc.  
 1770 Port Drive  
 Burlington WA 98233 USA  
 Tel +1 360-569-4733